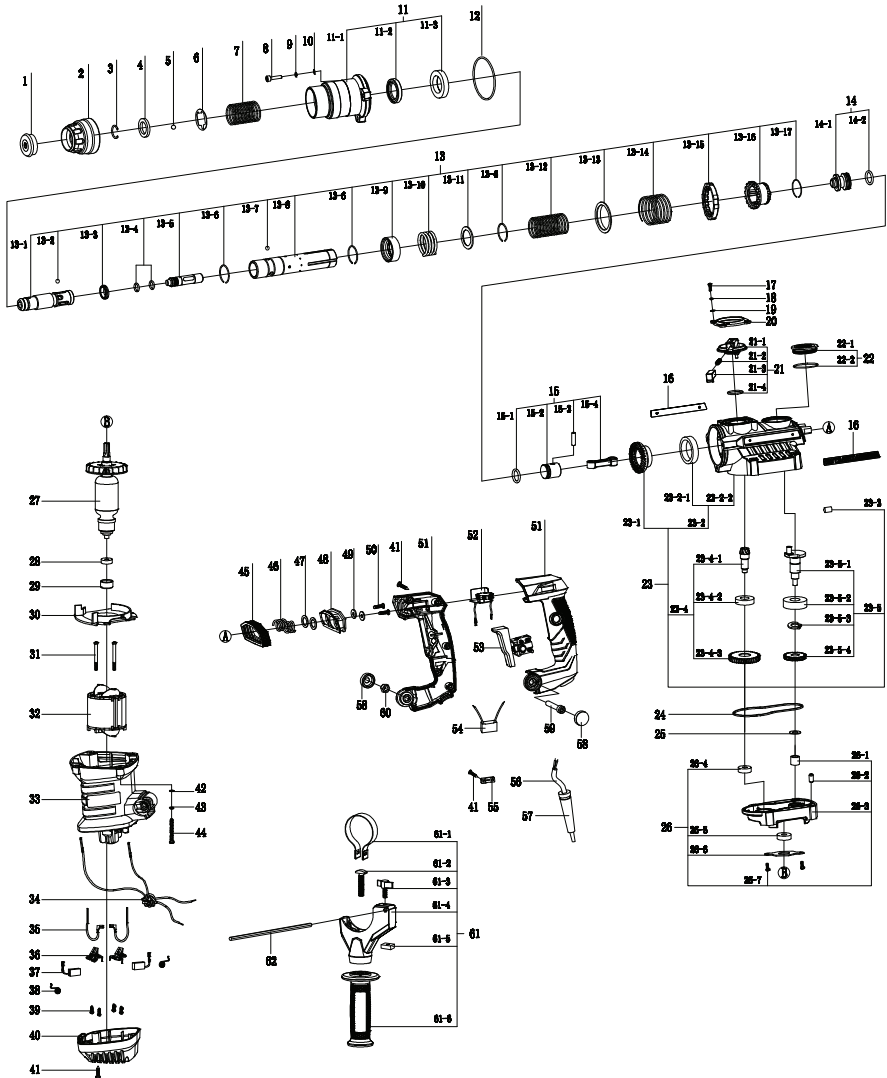


Exploded drawing of Rotary Hammer RDP-HD56



Parts List Rotary Hammer RDP-HD56

No.	Code	Description	No.	Code	Description
1	XJ-2802-09	Protective cap	23-4-1	JG-3501-11	Pinion
2	MS-3215-03	Protective sleeve	23-4-2	6002-2Z	Bearing 6002
3	TH-2001-01	Snap ring	23-4-3	JG-3501-12	Big gear
4	JG-2618A-01	Washer	23-5	ZJ-3501-05	Crank shaft assy
5	QT-2001-01	Ball	23-5-1	JG-3501-08	Crank shaft
6	MC-2001-04	Thrust	23-5-2	6203-2Z	Bearing 6203
7	TH-3501-01	Spring	23-5-3	QT-2006-02	Circlip 16
8	LD-4001-01	Screw M6x30	23-5-4	JG-3501-10	Gear
9	LD-3801-13	Spring washer φ6	24	MC-2806-03	Washer
10	LD-6501-10	Flat gasket φ6	25	XJ-3501-04	Seal ring
11	ZP-3501-01	Front cover assy	26	ZP-3501-06	Bottom cover assy
11-1	ML-3501-01	Front cover	26-1	QT-3212B-01	Bushing
11-2	XJ-3501-01	Oil seal	26-2	MC-2618-11	Pin
11-3	553310-2Z	Bearing	26-3	ML-3501-03	Bottom cover
12	XJ-3501-05	O-ring	26-4	608-2Z	Ball bearing 608
13	ZJ-3501-03	Ratchet sleeve	26-5	6001-2RS	Ball bearing 6001
13-1	JG-3501-01	Drill bush	26-6	MC-2618-06	Bearing plate
13-2	QT-3501-01	Ball	26-7	LD-2605-02	Screw M4x10
13-3	XJ-3501-02	Oil seal	27	ZJ-3501-01	Rotor
13-4	XJ-2618-02	O-ring	28	607-2RS	Bearing
13-5	JG-3501-03	Impact bolt	29	XJ-2802-10	Rubber sleeve
13-6	TH-2402-05	Snap ring	30	MS-3216-04	Air-d
13-7	QT-2001-01	Ball	31	LD-3207-01	Screw
13-8	JG-3501-02	Connecting sleeve	32	ZJ-3211-02	Stator
13-9	JG-3501-09	Sleeve	33	MS-3216-01	Motor housing
13-10	TH-3501-02	Spring	34	QT-3212-03	Inductor
13-11	MC-3501-01	Washer	35	QT-4005-03	Connecting cable
13-12	TH-3501-03	Clutch spring	36	ZJ-4005-04	Brush holder assy
13-13	MC-3501-02	Spring plate	37	QT-3212A-01	Carbon brush
13-14	TH-3501-04	Clutch spring	38	QT-4001-04	Circle spring
13-15	MS-3501-06	Clutch sleeve	39	LD-2618-01	Screw ST3.9x12
13-16	JG-3501-05	Clutch	40	MS-3216-02	Housing cover
13-17	TH-4001-05	Retaining ring	41	LD-2202-03	Screw ST3.9x16
14	ZP-3501-02	Striker assy	42	LD-2407-02	Flat washer φ5
14-1	JG-3501-04	Striker	43	LD-3801-03	Spring washer φ5
14-2	XJ-4002-05	O-ring	44	LD-3501-01	Screw M5x55
15	ZP-3501-03	Connecting rod assy	45	XJ-3212B-01	Dust cover
15-1	XJ-4002-05	O-ring	46	TH-2618-01	Damping spring
15-2	MS-3501-05	Piston	47	MC-2602-03	Bearing washer 6002
15-3	JG-3501-14	Pin	48	MS-3212B-11	Spring plate
15-4	MS-3501-04	Connecting rod	49	MC-2618-05	Screw washer
16	MS-3501-07	Plastic sheet	50	LD-3553-04	Screw M5x12
17	LD-CJZ1301/18V-01	Screw M4x12	51	MS-3212B/KS-01	Handle
18	LD-3801-05	Spring washer φ4	52	QT-3212-01	Speed controller
19	LD-3801-16	Flat washer φ4	53	KG-10(10)A-	Switch
20	MS-3501-03	Knob cap	54	QT-3212-02	Capacitor
21	ZP-3501-04	Shifting gear assy	55	MS-2001-05	Cord clip
21-1	MS-3501-01	Selector knob	56	DX-3212	Cable
21-2	TH-2402-01	Spring	57	XJ-2001-10	Cord guard
21-3	MS-3501-02	Button	58	MS-3212B-12	cap
21-4	XJ-2407-08	O-ring	59	LD-6505-01	Screw M8*40
22	ZP-3216	Filler cap assy	60	LD-2001-09	Nut M8
22-1	MS-3216-03	Filler cap	61	FZ-2236	Auxiliary handle assy
22-2	XJ-6505-06	O-ring	61-1	MC-3215-01	Clamping band
23	ZP-3501-07	Gear box assy	61-2	LD-1903-01	T-bolt
23-1	JG-3501-06	Bevel gear	61-3	MS-3212B-09	Screw button
23-2	ZP-3501-05	Gear box assy	61-4	MS-3215-04	Clamp holder
23-2-1	JG-3501-07	Bushing	61-5	MS-2001-10	block
23-2-2	ML-3501-02	Gear box	61-6	MS-2621-05	Auxiliary handle
23-3	QT-6501-13	Oil wick	62	MC-3212-02	Depth gauge
23-4	ZJ-3501-04	Pinion assy			